

A long-exposure photograph of a rocky coastline. In the foreground, dark, jagged rocks are partially submerged in the water. The middle ground shows a calm sea with white foam from waves washing onto a sandy beach. In the background, several prominent sea stacks rise from the water, and a large, dark cliff face is visible on the right side. The sky is filled with soft, wispy clouds, and the overall color palette is muted, with blues, greys, and whites.

**MIRRELLA**

**TITANIUM**



**MADE IN SPAIN**

**[www.mirrella.com](http://www.mirrella.com) | 800.471.6164**





### NEW CONCEPT IN SURFACE DECORATION

The Titanium series is definitely ahead of time and creates new trends in the decoration and design of spaces.

### NUEVO CONCEPTO EN LA DECORACIÓN DE SUPERFICIES

La serie Titanium crea nuevas tendencias en cuanto a la decoración y el diseño de espacios, avanzándose en el tiempo.



# TITANIUM

## COMBINABILITY AND HARMONY.

The Titanium series is presented in three totally innovative shades: Graphite, Greige and Pearl, without losing a hint of chromatic harmony.

Inspired by brushed metal and scratched by the constant use of time, yet with a sophisticated and elegant finish.

## COMBINABILIDAD Y HARMONÍA.

La serie Titanium se presenta en tres tonos: Graphite, Greige y Pearl, totalmente innovadores, sin perder un ápice de la armonía cromática. Inspirado en el metal cepillado y rayado por el paso constante del tiempo, pero con un acabado sofisticado y elegante.

GRAPHITE

GREIGE

PEARL

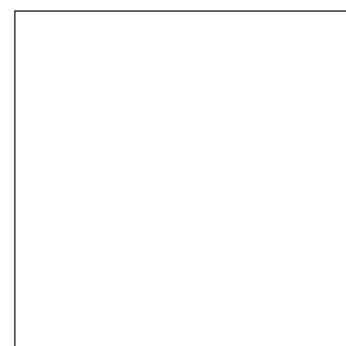


# SIZES | FORMATOS

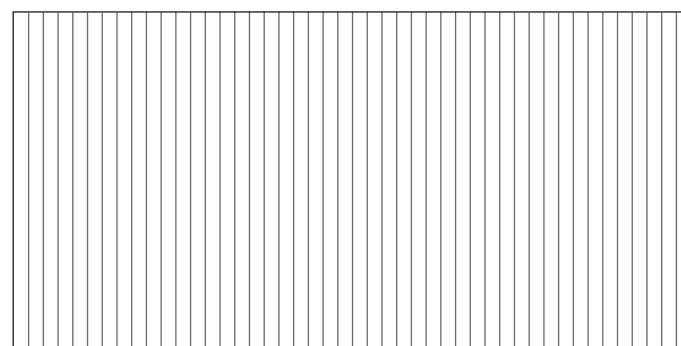
## PORCELAIN | PORCELÁNICO



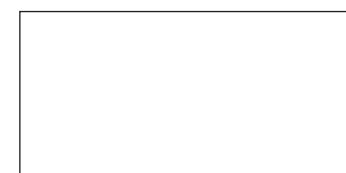
60x120 Rect.  
24"x48" Rect.



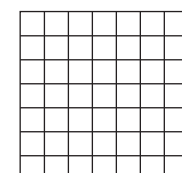
60x60  
59x59 Rect.  
24"x24" Rect.  
23"x23" Rect.



60x120 Rect.  
24"x48" Rect.



29,4x59 Rect.  
12"x24" Rect.



30x30  
12"x12" Rect.

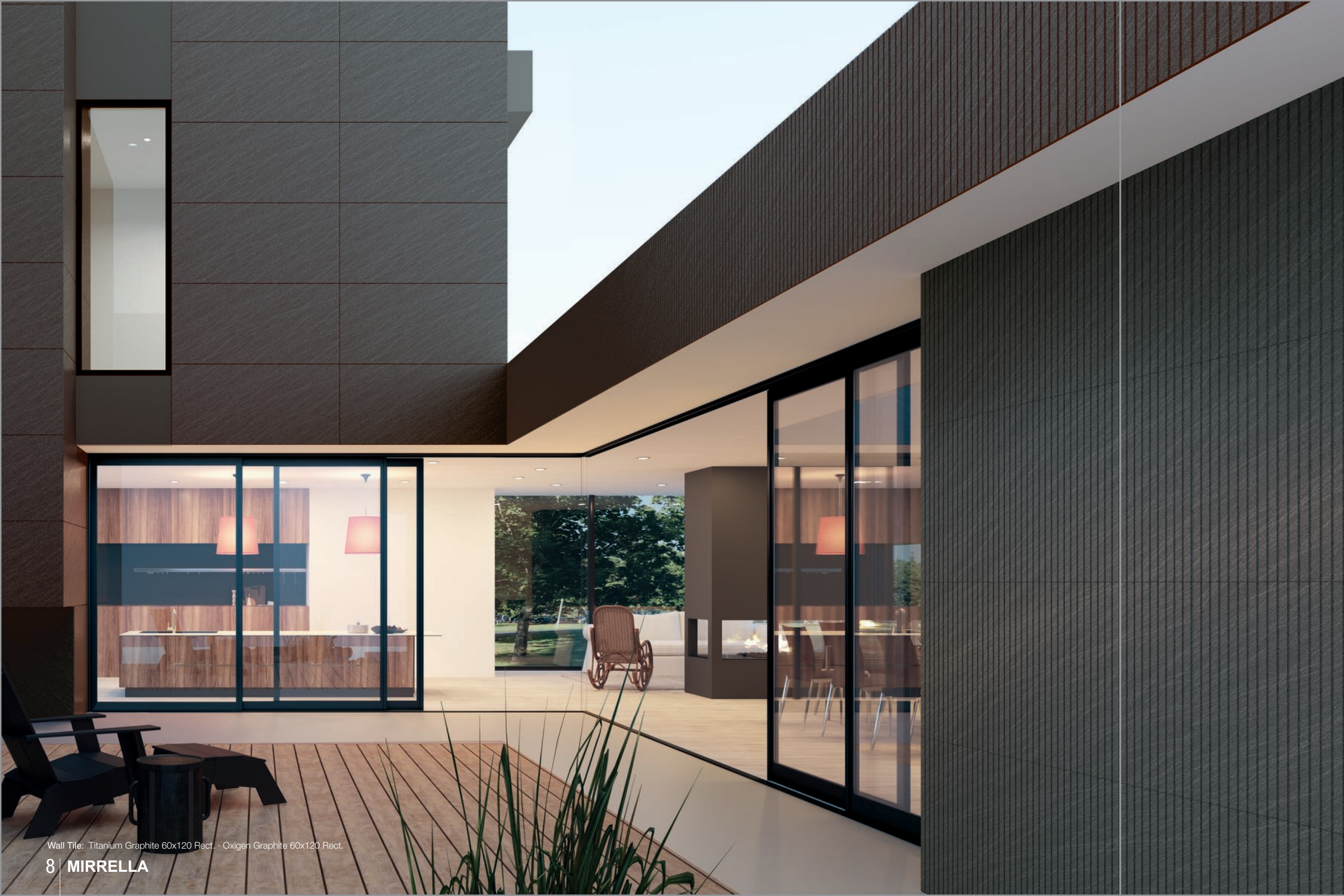
## WHITE BODY | PASTA BLANCA



29x100 Rect.  
12"x40" Rect.



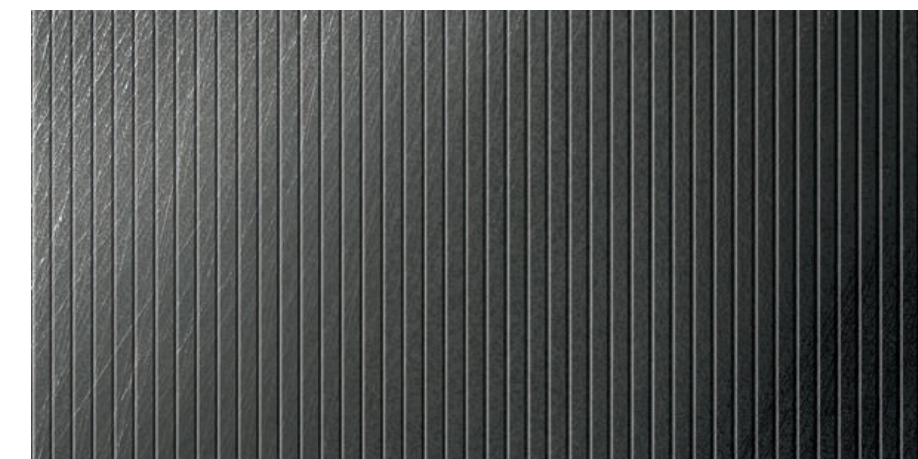




Wall Tile: Titanium Graphite 60x120 Rect. - Oxigen Graphite 60x120 Rect.

# TITANIUM

60x120 Rect. · 60x60 | 59x59 Rect. · 29,4x59 Rect.  
24x48  
PORCELAIN | PORCELÁNICO



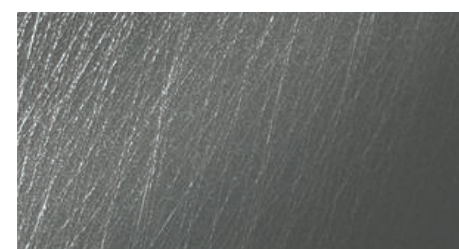
Oxigen Graphite  
60x120cm (24"x48") Rect. B-106



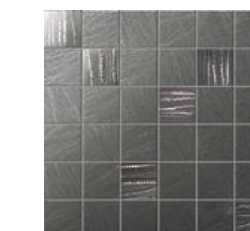
Titanium Graphite  
60x60cm 24" B-11  
59x59cm 23" Rect. B-98



Titanium Graphite  
60x120cm (24"x48") Rect. B-58



Titanium Graphite  
29,4x59cm (12"x24") Rect. B-120



Mosaico Titanium Graphite  
30x30cm (10"x10") B-74



Perfil Acero Inox Esmeril  
1x120cm S-22

Perfil Acero Inox Esmeril  
0,5x120cm S-46



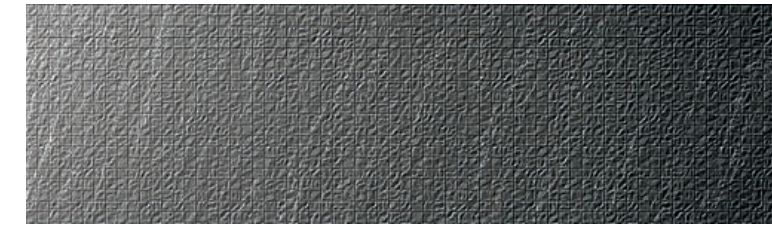


Wall Tile: Indium Graphite 29x100 Rect. · Titanium Pearl 29x100 Rect. · Titanium Graphite 29x100 Rect. · Decor Iridium Graphite 29x100 Rect. · Floor Tile: Titanium Graphite 59x59 Rect.

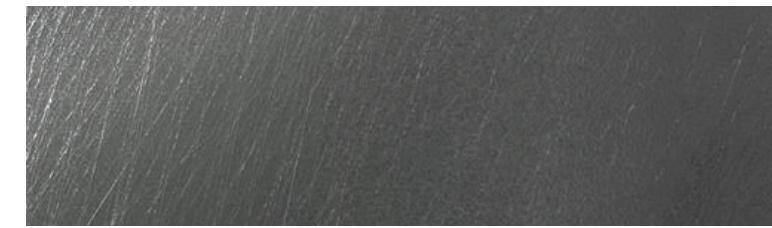
# TITANIUM

WHITE BODY | PASTA BLANCA

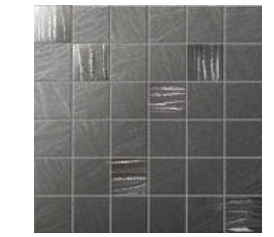
29x100 Rect.  
11"x39" Rect.



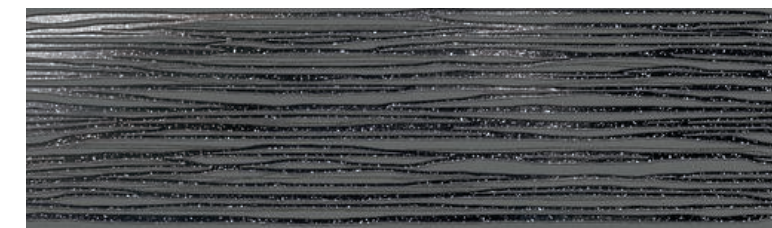
**Indium Graphite**  
29x100cm (12"x40") Rect. B-108



**Titanium Graphite**  
29x100cm (12"x40") Rect. B-114



**Mosaico Titanium Graphite**  
30x30cm (12"x12") B-74



**Decor Iridium Graphite**  
29x100cm (12"x40") Rect. S-88



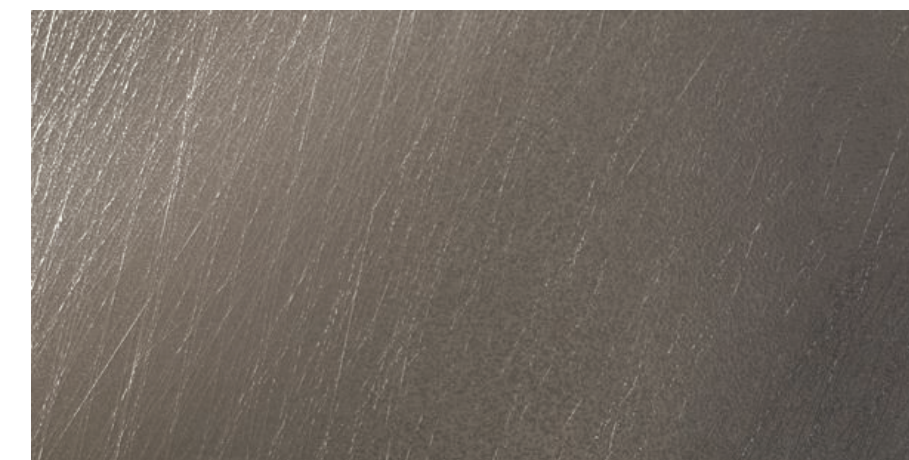


Wall Tile: Titanium Greige 60x120 Rect. - Floor Tile: Titanium Greige 60x120 Rect.

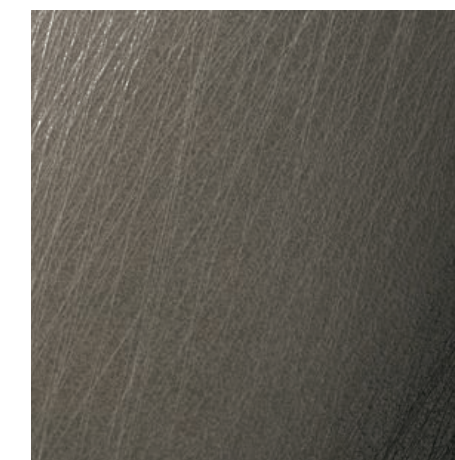
# TITANIUM

60x120 Rect. · 60x60 | 59x59 Rect. · 29,4x59 Rect.  
24x48" Rect. · 24x24" | 23x23 Rect. · 11x23" Rect.

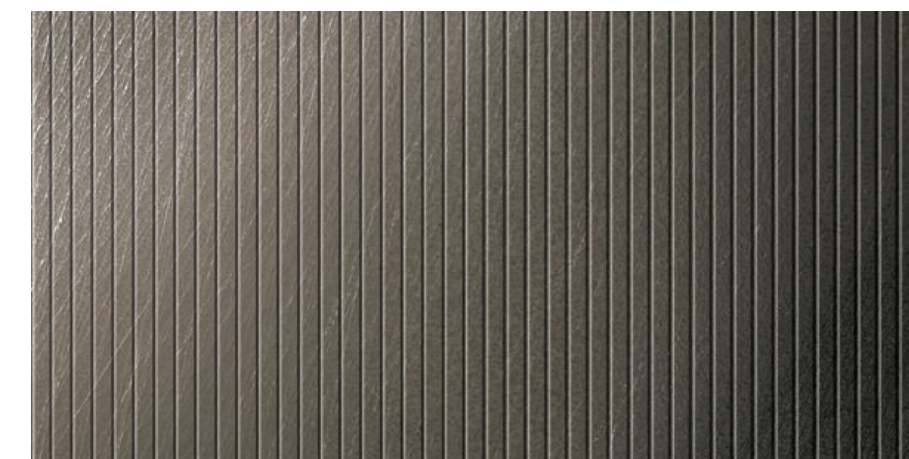
PORCELAIN | PORCELÁNICO



Titanium Greige  
60x120cm (24"x48") Rect. B-58



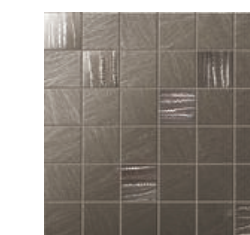
Titanium Greige  
60x60cm 24" B-11  
59x59cm 23" Rect. B-98



Oxigen Greige  
60x120cm (24"x48") Rect. B-106



Titanium Greige  
29,4x59cm (12"x24") Rect. B-120



Mosaico Titanium Greige  
30x30cm (12"x12") B-74



Perfil Acero Inox Esmeril  
1x120cm S-22

Perfil Acero Inox Esmeril  
0,5x120cm S-46





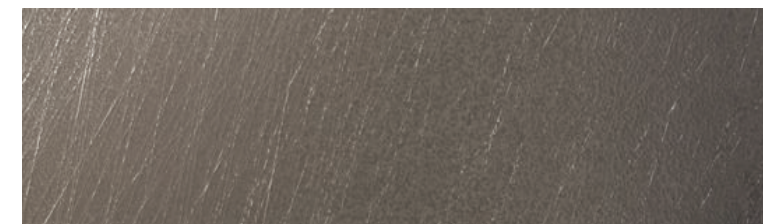
Wall Tile: Titanium Greige 60x120 Rect. · Ribbon Maple 60x120 Rect. · Floor Tile: Titanium Greige 60x120 Rect. · Ribbon Maple 60x120 Rect.

# TITANIUM

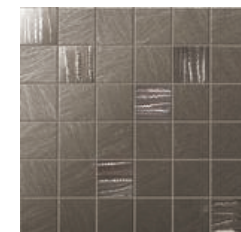
29x100 Rect.  
11"x39" Rect.  
WHITE BODY | PASTA BLANCA



**Indium Greige**  
29x100cm (12"x40") Rect. B-108



**Titanium Greige**  
29x100cm (12"x40") Rect. B-114



**Mosaico Titanium Greige**  
30x30cm (12"x12") B-74



**Decor Iridium Greige**  
29x100cm (12"x40") Rect. S-88





Wall Tile: Oxigen Pearl 60x120 Rect. - Floor Tile: Titanium Pearl 60x120 Rect.

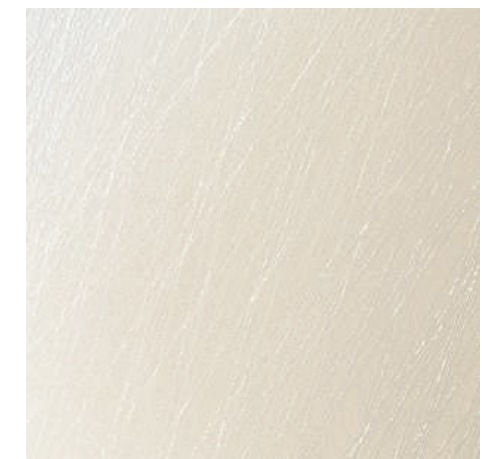
# TITANIUM

60x120 Rect. · 60x60 | 59x59 Rect. · 29,4x59 Rect.  
24x48" Rect. · 24x24" | 23x23 Rect. · 11x23" Rect.

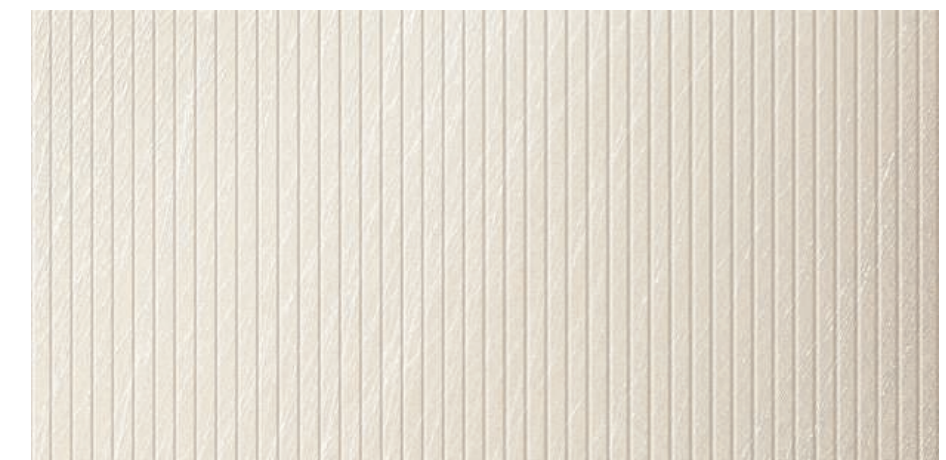
PORCELAIN | PORCELÁNICO



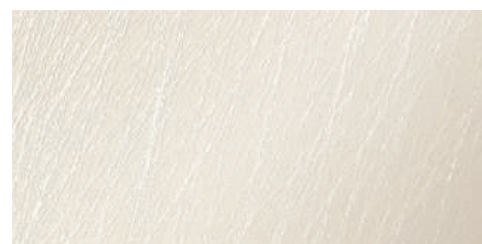
Titanium Pearl  
60x120cm (24"x48") Rect. B-58



Titanium Pearl  
60x60cm 24" B-11  
59x59cm 23" Rect. B-98



Oxigen Pearl  
60x120cm (24"x48") Rect. B-106



Titanium Pearl  
29,4x59cm (12"x24") Rect. B-120



Mosaico Titanium Pearl  
30x30cm (12"x12") B-74



Perfil Acero Inox Esmeril  
1x120cm S-22

Perfil Acero Inox Esmeril  
0,5x120cm S-46



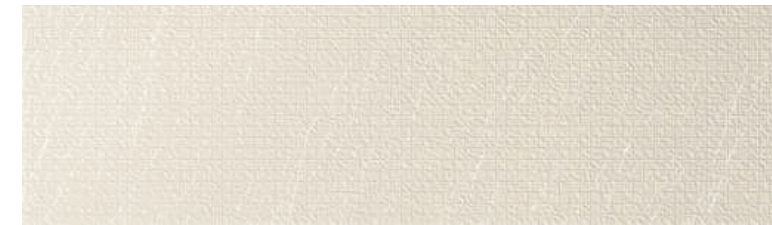


Wall Tile: Indium Pearl 29x100 Rect. · Titanium Pearl 29x100 Rect. · Decor Iridium Pearl 29x100 Rect. · Floor Tile: Titanium Greige 59x59 Rect.

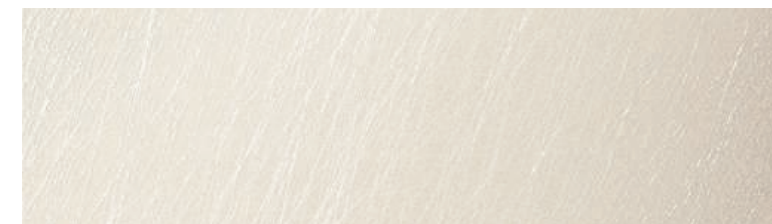
# TITANIUM

WHITE BODY | PASTA BLANCA

29x100 Rect.  
11"x39" Rect.



Indium Pearl  
29x100cm (12"x40") Rect. B-108



Titanium Pearl  
29x100cm (12"x40") Rect. B-114



Mosaico Titanium Pearl  
30x30cm (12"x12") B-74



Decor Iridium Pearl  
29x100cm (12"x40") Rect. S-88



# SYMBOLS

simbología · simboles · symbole · simbologia · условные обозначения · الرموز

|   | ES        | EN          | FR                 | DE           | IT                       | RU              |
|---|-----------|-------------|--------------------|--------------|--------------------------|-----------------|
|  | Pavimento | Floor tiles | Carreaux pour sols | Bodenfliesen | Piastrelle per pavimento | Плитка для пола |





|   |               |            |          |             |                                       |                 |
|---|---------------|------------|----------|-------------|---------------------------------------|-----------------|
|  | Revestimiento | Wall tiles | Faïences | Wandfliesen | Piastrelle per rivestimento di pareti | Плитка для стен |
|---|---------------|------------|----------|-------------|---------------------------------------|-----------------|







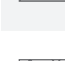






|          | Clasificación de las cerámicas  | Classification of tiles   | Classification des carreaux   | Klassifizierung der fliesen   | Classificazione delle piastrelle  | Классификация керамики  |
|----------|---|---|---|---|---|---|
| <b>D</b> | Materiales aconsejados solamente para baños y dormitorios de viviendas; se debe evitar toda abrasión. | Tiles suitable only for bathrooms and bedrooms; any type of abrasion must be avoided. | Carreaux conseillés uniquement pour salles de bains et chambres à coucher d'habitations; éviter toute abrasion. | Empfohlen nur für Bad und Schlafzimmer ohne direkten Zugang von außen, sehr kratzempfindlich. | Materiali consigliati solo per bagni e camere da letto di abitazioni; ogni abrasione deve essere evitata. | Материалы, рекомендуемые только для ванных комнат и спален, чувствительна к истиранию |

|          |  |   |   |   |   |  |
|----------|--|---|---|---|---|--|
| <b>E</b> | Materiales aconsejados para todas las habitaciones de una vivienda excluyendo el vestíbulo y la cocina; atenuada exposición a la abrasión. | Tiles suitable for all rooms of a house except the entrance hall and the kitchen; light traffic area. | Carreaux conseillés pour toutes les pièces d'un appartement excepté le vestibule et la cuisine; faible résistance à l'abrasion. | Empfohlen für alle Räume des Wohnbereichs, mit Ausnahme von Eingängen, Küchen und ähnlichen Räumen; leichte Abriebsbeanspruchung. | Materiali consigliati per tutti i locali di una abitazione, con esclusione dell'ingresso e della cucina; deboli sollecitazioni all'abrasione. | Материалы, рекомендуемые для всех жилых помещений, кроме коридора и кухни; определенная подверженность к истиранию |
|----------|--|---|---|---|---|--|

|          |  |  |  |   |   |  |
|----------|--|--|--|---|---|--|
| <b>F</b> | Materiales aconsejados para cualquier habitación de una vivienda sin accesos directos desde el exterior o accesos no protegidos por felpudos. Esfuerzos medianos por abrasión. | Materials suggested for any room of a house without direct access from the outside or access not protected by doormats. Medium stresses due to abrasion. | Matériaux conseillés pour tous les pièces d'une habitation qui n'a pas de liaison directe avec l'extérieur ou d'accès non protégés par des paillassons. Résistance moyenne à l'abrasion. | Empfohlen für Räume des Wohnbereichs, zu denen es keinen direkten Zugang von außen gibt, oder die nicht durch Fußmatten abgegrenzt sind. Mittlere Abriebsbeanspruchung. | Materiali consigliati per qualsiasi locale di un'abitazione che non abbia collegamenti diretti con l'esterno o accessi non protetti da zerbini. Medie sollecitazioni all'abrasione. | Материалы рекомендуемые для любых жилых помещений без прямого доступа извне или без коврового покрытия у входа |
|----------|--|--|--|---|---|--|

|          |  |   |   |   |  |  |
|----------|--|---|---|---|--|--|
| <b>G</b> | Materiales recomendados para locales sometidos a esfuerzos medio-pesados como: casas unifamiliares, actividades comerciales con tránsito limitado, oficinas, hoteles, restaurantes, etc... | Materials suggested for rooms undergoing medium-heavy traffic, such as: cottages, light-trampled commercial buildings, offices, hotels, restaurants, etc... | Matériaux conseillés pour les locaux soumis à un transit moyen à élevé à lourdes comme: maisons individuelles, petit commerce, bureaux, hôtels, restaurants, etc. | Geeignet für Räume mit mittlerem bis starken Fußgängerverkehr wie Einfamilienhäuser, Geschäfte mit gegrenztem Verkehr, Büros, Hotels, Restaurants, usw. | Materiali consigliati per locali sottoposti a sollecitazioni medio pesanti come: case individuali, commerciale leggero, uffici, alberghi, ristoranti, ecc. | Материалы, рекомендуемые для помещений среднетяжелой нагрузки: виллы, торговые помещения с ограниченной посещаемостью, офисы, отели, рестораны и т. д. |
|----------|--|---|---|---|--|--|

|   | ES                    | EN                         | FR                   | DE         | IT                   | RU                |
|---|-----------------------|----------------------------|----------------------|------------|----------------------|-------------------|
|   | Acabado de las piezas | The finishing of the piece | Finition de la pièce | Endprodukt | Rifinitura del pezzo | отделка изделий   |
|  | Brillo                | Gloss Finish               | Brillant             | Glänzend   | Brillante            | блеск             |
|  | Satinado              | Satin Finish               | Satiné               | Satinient  | Satinato             | глянцевая отделка |
|  | Mate                  | Matt Finish                | Mat                  | Matt       | Opaco                | матовый           |
|  | Metal                 | Metallic Finish            | Métallique           | Metallic   | Metallica            | металлический     |

|   | ES  | EN  | FR   | DE  | IT   | RU  |
|---|---|---|--|---|--|---|
|    | Producto / Diseño Tecnología Digital  | Product / Design Digital Technology   | Produit / Design Technologie Digitale  | Produkt / Design mit Digitaler Technologie  | Prodotto / Disegno Tecnologia digitale   | продукт / технология цифрового дизайна  |
|    | Variación de tonalidad Uniforme   | Shade variation Uniform   | Variation de tonalité Uniforme   | Gleichmäßige Farbtöne Variation   | Variazioni di tonalità Uniforme  | Перечень оттенков краски Однотонные   |
|    | Variación de tonalidad Leve   | Shade variation Slight  | Variation de tonalité Légère   | Leichte Farbtöne Variation  | Variazioni di tonalità Lieve   | Перечень оттенков краски Слабые   |
|    | Variación de tonalidad Media  | Shade variation Medium  | Variation de tonalité Moyenne  | Mittlere Farbtöne Variation   | Variazioni di tonalità Media   | Перечень оттенков краски Средние  |
|    | Variación de tonalidad máxima   | Shade variation Maximum   | Variation de tonalité Maximum  | Höchste Farbtöne Variation  | Variazioni di tonalità Massima   | Перечень оттенков краски Яркие  |
|    | Gres porcelánico con coloración en masa. Grupo de pertenencia Bla GL  | Porcelained stoneware with mass colouring. Belonging to Bla GL group                  | Grès cérame avec pate colorée. Groupe d'appartenance Bla GL  | Durchgefärbtes Feinsteinzeug. Zugehörigkeitsgruppe Bla GL   | Gres Porcellanato colorazione in massa. Gruppo di appartenenza Bla GL  | Фарфоровый керамогранит, окрашенный по всей толщине. Группа принадлежности Bla - GL           |
|    | Producto con los bordes de sus piezas rectificadas, microbiselados  | Products with squared, micro-bevelled edges   | Produit dont les pièces ont les bords rectifiés et microbiseautés  | Produkt mit kalibrierten, gefasteten Kanten   | Prodotto con i bordi dei suoi pezzi rettificati, microsmussati   | Изделие с шлифованными краями, микрофасками и глянцевои поверхностью                          |
|    | Producto con los bordes de sus piezas rectificadas, microbiselados y con la superficie lapada                     | Products with squared, micro-bevelled edges and a semi-polished surface               | Produit dont les pièces ont les bords rectifiés et microbiseautés et la surface semi-brillante (lappato) | Produkt mit kalibrierten, gefasteten Kanten und anpolierter Oberfläche                              | Prodotto con i bordi dei suoi pezzi rettificati, microsmussati e con la superficie lappata                       | Ректифицированный материал, с микрофаской по контуру плитки и с полуполированной поверхностью |
|    | Producto con los bordes de sus piezas rectificadas, microbiselados y con la superficie pulida especial patentada. | Products with squared, micro-bevelled edges and a patented special polished surface.  | Produit aux bords rectifiés, microbiseautés, avec une surface polie brevetée.                            | Produkt mit den Kanten rektifiziert und mikro-abgeschragt und polierte Oberfläche.                  | Prodotto con i bordi dei suoi pezzi rettificati, microsmussati e con la superficie speciale lucidata brevettata. | Ректифицированный с микрофаской материал с специальной патентованной полировкой               |
|    | Para una óptima instalación, se recomienda colocar con una distancia de trabado no superior al 30%                | We recommend not to exceed a 1/3 or 2/3 bond for an optimal installation of the tiles | Pour une pose optimale, respecter la norme 1 tiers/2 tiers   | Für eine optimale Montage, wird empfohlen, einen Verlegungsabstands von 30% nicht zu überschreiten. | Per un'ottima installazione, si raccomanda collocare con una distanza di unito non superiore al 30 per cento     | Для оптимальной установки рекомендуется находиться на дистанции не более 30%                  |
|   | Coefficiente de fricción  | Friction Coefficient  | Coefficient de friction  | Reibungskoeffizient   | Coefficiente di frizione   | Коэффициент трения  |
|  | Coefficiente dinámico de fricción, acorde a la norma ASTM.  | Dynamic Coefficient of Friction according to ASTM standards                           | Coefficient dynamique de friction, en accord avec la norme ASTM  | Dynamischer Reibungskoeffizient laut ASTM Norm  | Coefficiente dinamico di frizione, come la norma ASTM  | динамический коэффициент трения в соответствии с ASTM   |
|  | Producto anti deslizante  | Anti-slip product   | Produit anti-dérapant  | Rutschsicheres produkt  | Prodotto antiscivolo   | Противоскользящий материал  |
|  | Producto m²   | Product m²  | Produit m²   | Produkt pro Qm verkauft   | Prodotto m²  | Материал по M2  |
|  | Tecnología vitrificada.   | Vitrified technology  | Technologie vitrifiée  | Glasierte Technologie.  | Tecnologia vetrificataV  | Остеклованная технология  |
|  | Acabado extra blanco.   | Extra white finished.   | Finition extra blanche   | Extra weisse Ausführung.  | Finitura extra bianca.   | Экстрабелая отделка   |



# PACKING

PACKING CONDITIONS ACCORDING TO REGULATIONS UNE EN 14411  
CONDICIONES DE EMBALAJE Y EXPEDICIÓN SEGÚN NORMAS UNE EN 14411

| TITANIUM PORCELAIN   TITANIUM PORCELÁNICO |                    |                         |  |                             |  |                             |                               |                            |                                |                             |
|---|--------------------|-------------------------|--|-----------------------------|--|-----------------------------|-------------------------------|----------------------------|--------------------------------|-----------------------------|
| Size cm<br>Medidas cm                     | Inches<br>Pulgadas | Tiles/Box<br>Pzas./Caja | SQM/Box<br>m <sup>2</sup> /Caja aprox. | Boxes/Pallet<br>Cajas/Palet | SQM/Pallet<br>m <sup>2</sup> /Palet aprox. | Thickness<br>Espesor aprox. | Kgs/Piece<br>Kgs/Pieza aprox. | Kgs/Box<br>Kgs/Caja aprox. | Kgs/Pallet<br>Kgs/Palet aprox. | Size Pallet<br>Medida Palet |
| 60x120 Rect.                              | 23.62x47.24        | 2                       | 1,44                                   | 27                          | 38,88                                      | 10,5                        | 17,75                         | 35,84                      | 989                            | 80x120                      |
| 60x120 Rect. Oxigen                       | 23.62x47.24        | 2                       | 1,44                                   | 27                          | 38,88                                      | 10,5                        | 17,75                         | 35,84                      | 989                            | 80x120                      |
| 60x60                                     | 23.62x23.62        | 4                       | 1,44                                   | 32                          | 46,08                                      | 9                           | 7,42                          | 30,09                      | 984                            | 80x120                      |
| 59x59 Rect.                               | 23.22x23.22        | 4                       | 1,39                                   | 32                          | 44,48                                      | 9                           | 6,85                          | 26,53                      | 871                            | 80x120                      |
| 29,4x59                                   | 11,57x23,23        | 6                       | 1,04                                   | 40                          | 41,64                                      | 9                           | 3,59                          | 21,71                      | 891                            | 80x120                      |

| TITANIUM WHITE BODY   TITANIUM PASTA BLANCA |                    |                         |  |                             |  |                             |                               |                            |                                |                             |
|---|--------------------|-------------------------|--|-----------------------------|--|-----------------------------|-------------------------------|----------------------------|--------------------------------|-----------------------------|
| Size cm<br>Medidas cm                       | Inches<br>Pulgadas | Tiles/Box<br>Pzas./Caja | SQM/Box<br>m <sup>2</sup> /Caja aprox. | Boxes/Pallet<br>Cajas/Palet | SQM/Pallet<br>m <sup>2</sup> /Palet aprox. | Thickness<br>Espesor aprox. | Kgs/Piece<br>Kgs/Pieza aprox. | Kgs/Box<br>Kgs/Caja aprox. | Kgs/Pallet<br>Kgs/Palet aprox. | Size Pallet<br>Medida Palet |
| 29x100 Rect.                                | 11.41x39.37        | 4                       | 1,16                                   | 42                          | 48,72                                      | 11                          | 5,96                          | 24,07                      | 1029                           | 123x102                     |
| 29x100 Rect. Indium                         | 11.41x39.37        | 4                       | 1,16                                   | 42                          | 48,72                                      | 11                          | 5,96                          | 24,07                      | 1029                           | 123x102                     |

# QUALITY

calidad · qualité · qualità · qualität · качество

## EN

All our tiles conform their specific European Norms (UNE EN 14411). We guarantee their characteristics except in cases of damages due to a bad setting or of improper use.

## DE

Alle unsere Produkte entsprechen den europäischen Normen (UNE EN 14411). Ihre Eigenschaften werden von uns garantiert, außer bei fehlerhafter Verlegung oder falscher Anwendung.

## ES

Todos nuestros productos son conformes a la específica Norma Europea (UNE EN 14411) que los distingue. Estas mismas características están por nosotros garantizadas excepto daños por uso impropio o imperfecta colocación.

## IT

Ogni nostro prodotto è conforme alla Norma Europea (UNE EN 14411) che lo distingue. Le sue caratteristiche sono da noi garantite salvo danni per posa imperfetta o per uso improprio.

## FR

Tous nos produits sont conformes- la Norme Européenne (UNE EN 14411) qui les distingue. Nous garantissons leurs caractéristiques sauf pour dégâts causés par une pose incorrecte ou par un mauvais usage.

## RU

Вся наша продукция соответствует специфическому европейскому стандарту (UNE EN 14411), который определяет ее особые свойства. Производитель гарантирует эти свойства за исключением случаев порчи по вине неправильного использования или укладки.

## EUROPEAN STANDARDS UNE

Normas Europeas · Normes Europees · Europäische Normen · Norme Europee · европейские стандарты



# ENVIRONMENTAL COMMITMENT

COMPROMISO MEDIOAMBIENTAL







[www.mirrella.com](http://www.mirrella.com) | 800.471.6164